

# Smart Home Wi-Fi Connection Guide

## Install App

Download the “Smart life” app from the Play Store (Android) or App Store (iOS).



Scan QR code

## Register

If you do not have a Smarter Home account, register or sign in with a verification code sent by SMS.

To register:

1. Tap to enter registration page
2. The system automatically recognises your country / area. You can also select your country code manually. Enter your mobile phone number/ email address and tap “Next”.
3. If you choose the mobile phone number option, then enter the verification code in the message sent to you by SMS. Set a password as prompted and press “Confirm” to finish your registration.

Register

Region Australia +61 >

Mobile Number/E-mail

Next

Register

Region Australia +61 >

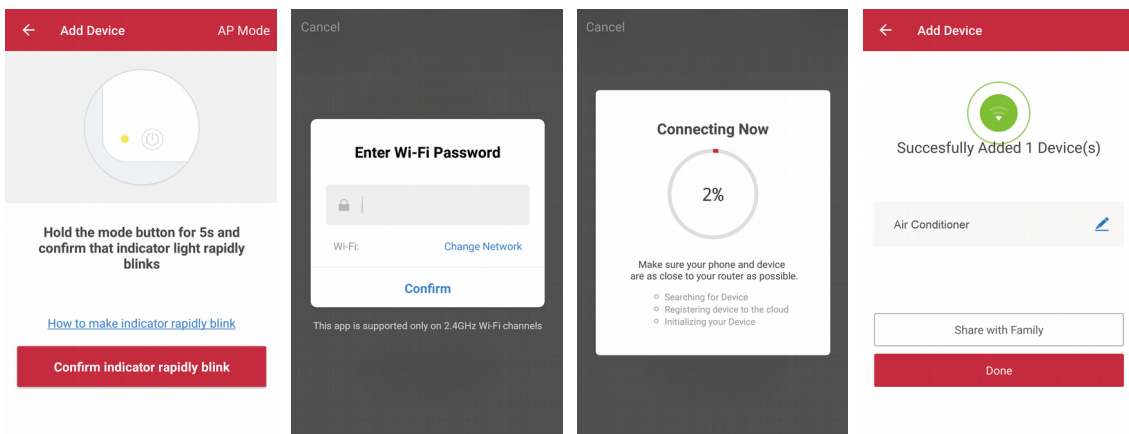
XXXXXXXXXX

Next

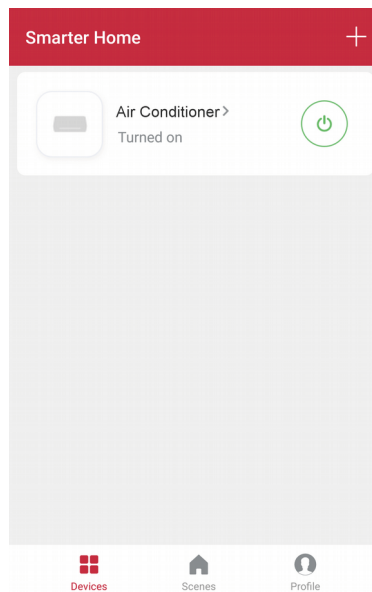
## Add Device Through Network

1. Power dehumidifier on, when dehumidifier under standby mode, press the “humidity” button for 3 seconds to enter Wifi-connect mode.
2. Open Smart Home app and tap “+” in the upper right to add a new device through the network.
3. Ensure the device’s indicator light rapidly flashes (2 times per second) and tap “Confirm light is rapidly flashing”.
4. Select Wi-Fi network (note: network must be 2.4Ghz band) and enter the password.

The device will commence the pairing process and connect to the app.



5. After successfully configuring the devices, the smart **DEH** will be shown on the home page. Tap to enter its control page.



### Note:

- When device is online, it can be controlled.
- When device is offline, it displays “Offline” and can be remotely powered on.

User manual is subject to change without notice. For the latest version of your user manual, please visit <http://bit.ly/csn0008>