



# FUTURAD



FutM2CE & FutM3CE

As with all portable heating appliances: This product is suitable only for well insulated spaces or occasional use.

08/54927/0 Issue 1

## Important Safety Advice

IMPORTANT: THESE INSTRUCTIONS SHOULD BE READ CAREFULLY BEFORE USE AND RETAINED FOR FUTURE REFERENCE

**WARNING:** To avoid danger of suffocation please remove all packaging materials particularly plastic and EPS and keep these away from vulnerable people, children and babies.

**WARNING:** To avoid the risk of accidental strangulation from the supply cord all children and vulnerable people must be supervised when in the vicinity of the product whether it is working or not.

**DO NOT** use the heater in the immediate surroundings of a bath, a shower or a swimming pool.

**DO NOT** place the heater directly below a fixed socket outlet. The socket-outlet must be accessible at all times to enable the mains plug to be disconnected as quickly as possible.

**WARNING:** In order to avoid overheating, do not cover the heater.



The heater carries a warning symbol to alert the user to the risk of fire that exists if the heater is accidentally covered.

**DO NOT** obstruct the air circulation around the radiator, for example with curtains or furniture, as this could cause overheating and a fire risk. See 'Positioning the Radiator'.

**DO NOT COVER** or obstruct the air inlet and outlet openings in any way.

**WARNING:** **DO NOT** use this heater in small rooms when they are occupied by persons not capable of leaving the room on their own, unless constant supervision is provided.

**IMPORTANT:** If the supply cord of this appliance is damaged, it must be replaced by qualified person in order to avoid a hazard.

**WARNING:** In order to avoid a hazard due to inadvertent resetting of the thermal cut-out, this appliance must not be supplied through an external switching device, such as a timer, or connected to a circuit that is regularly switched on and off by the utility.

This appliance can be used by children aged from 8 years and above and persons with reduced physical, sensory or mental capabilities or lack of experience or knowledge if they have been given supervision or instruction concerning the use of the appliance in a safe way and understand the hazards involved. Children shall not play with the appliance. Cleaning and user maintenance shall not be made by children without supervision. Children of less than 3 years

should be kept away unless continuously supervised. Children aged from 3 years and less than 8 years shall only switch on/off the appliance provided that it has been placed or installed in its intended normal operating position and they have been given supervision or instruction concerning the use of the appliance in a safe way and understand the hazards involved. Children aged from 3 years and less than 8 years shall not plug in, regulate and clean the appliance or perform user maintenance.

**CAUTION:** Some parts of this product can become very hot and cause burns. Particular attention has to be given where children and vulnerable people are present.

This radiator complies with stringent safety standards but to ensure efficient operation **SURFACES OF THE RADIATOR WILL BECOME HOT.**

The control panel area is designed to be cooler and allow safe operation of the controls at all times.

**IMPORTANT:** The feet supplied with the appliance must be used.

Use this heater on a horizontal and stable surface with the feet securely fitted.

**DO NOT** use this heater if it has been dropped.

**DO NOT** use if there are visible signs of damage to the heater.

**WARNING:** To reduce risk of fire, keep textiles, curtains, or any other flammable material a minimum distance of 1m from the appliance.

**WARNING:** Risk of fire – Do not use this appliance connected through an extension lead or any external switching device such as a plug in timer or remote control plug in adaptor. All heating appliances draw high current through the mains supply and any weakness in the design, connections or components in these devices can easily result in overheating of the connection points resulting in melting, distortion and even the risk of fire!

**DO NOT** use the heater on deep pile carpets or the long hair type of rugs, or less than 750mm (30") away from any overhanging surface. Keep combustible materials such as drapes and other furnishings clear from the front, sides and rear of the heater. Do not use heater to dry your laundry.

**DO ENSURE** that the mains lead cannot be tripped over.

DO NOT operate the radiator with the mains lead overhanging the outlet grille.

If the radiator is tipped over, unplug it and allow it to cool before standing it back up.

DO NOT pull, carry or move the appliance using the power cable.

The supply cord should be uncoiled before use.

This instruction leaflet belongs to the appliance and must be kept in a safe place. If changing owners, the leaflet must be surrendered to the new owner.

to this heater, therefore cut off the plug. When cut off this plug can constitute a shock hazard if inserted into a socket outlet. It must therefore be disposed of safely.

IMPORTANT: The wires in this mains lead are coloured in accordance with the following code:

BLUE: NEUTRAL

BROWN: LIVE

GREEN & YELLOW: EARTH

As the colours of the wires in the mains lead may not correspond with the coloured markings in your plug, proceed as follows:

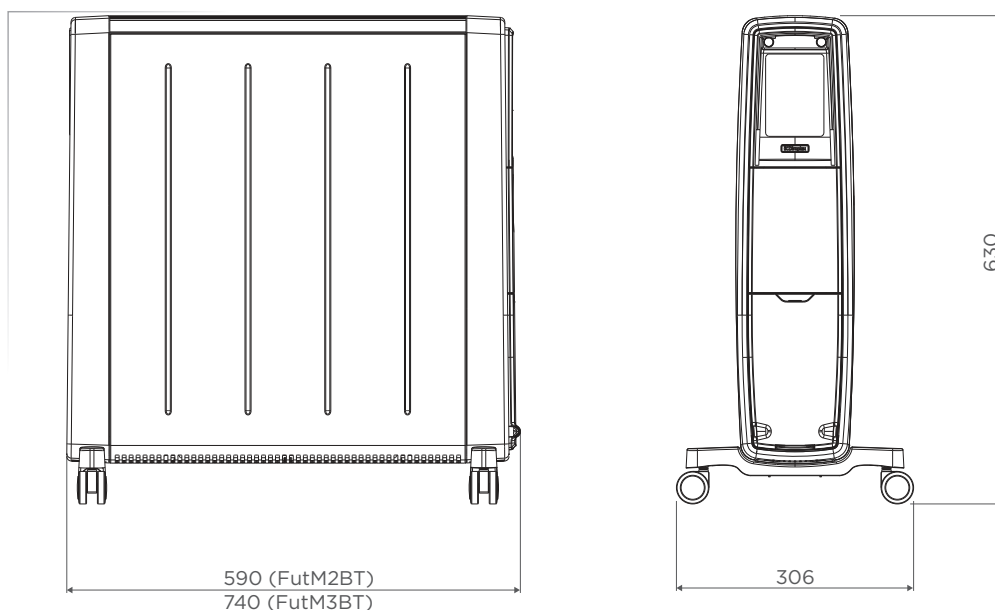
Connect the BROWN wire to the terminal marked 'L' or coloured RED. Connect the BLUE wire to the terminal marked 'N' or coloured BLACK. Note: 'L' or 'N' must not be connected to the EARTH terminal marked 'E' or '⊕' or coloured GREEN or GREEN AND YELLOW. If in doubt, consult your electrician.

## ELECTRICAL CONNECTION

WARNING: THIS APPLIANCE MUST BE EARTHED

If the socket outlets in your home are not of the 13 amp BS1363 type they will not accept the plug connected

## Dimensions & Range Info



## Models

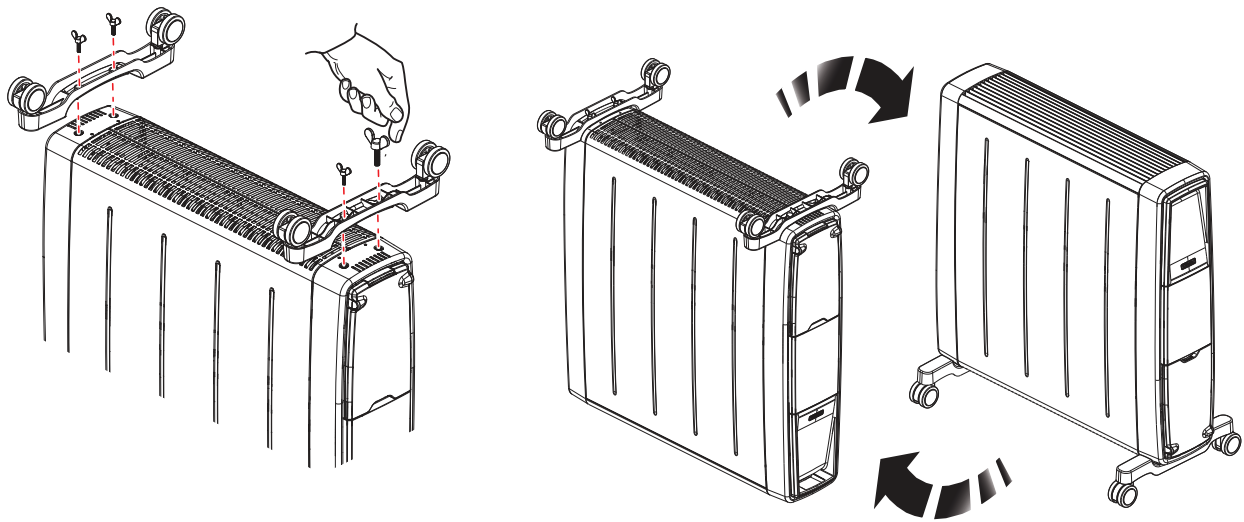
Model	Description	Power
FutM2CE	Electronic thermostat control with 12 hour Runback or Delayed start timer	2.0 kW
FutM3CE	Electronic thermostat control with 12 hour Runback or Delayed start timer	3.0 kW

## General

The radiator is designed for operation on an AC electricity supply, and is suitable for use in domestic dwellings and similar indoor locations.

The radiator is fitted with castors and handles for ease of movement. An electronic thermostatic control provides precise room temperature control with Runback timer and Delayed start functionality. It is supplied with a cord and plug and is ready for use once the castors have been correctly fitted.

## Assembly

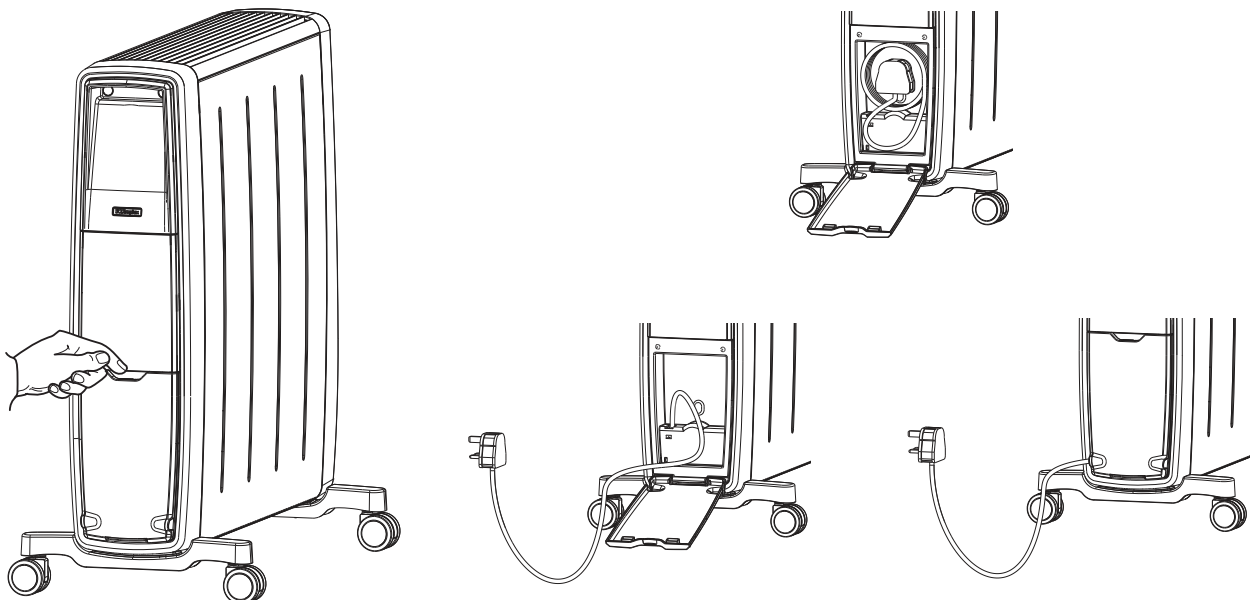


**WARNING** - The radiator must only be operated with the wheels and castors securely fitted and in the upright position.

**WARNING** - The radiator is heavy – ensure that it is supported to prevent it from toppling. Ask a second person to help with this if necessary.

- Open the packaging and remove the product.
- Turn the radiator upside down on a carpet or other soft surface to avoid damage.
- Fit the castors in position and secure using the wing bolts. There are alignment guides to ensure the correct positioning and orientation of the castor plate.
- Return the radiator to the correct orientation so it rests on the castors.
- The product is now ready for use, always ensure the product is on a flat stable surface when in use.

## Cable Storage



- There is a cable storage compartment located at the bottom of the control panel,
- To access the cable storage box, pull the cable storage box door to open,
- When the product is not in use neatly coil the cable around the outside of the storage box and position the plug in the centre. The storage box door can then be closed,
- While the product is in operation, the cable must be fully uncoiled. The cable should be positioned towards the bottom of the cable wrap box so the door can be closed.
- The cable can be positioned to exit the product from the left or right hand side.

**WARNING** - The supply cord must be fully uncoiled before use.

## Operation

Before using the heater ensure that all warnings and instructions have been read carefully.

**IMPORTANT** - Objects or clothing must not be placed on the appliance.

**IMPORTANT** - Do not operate unless the castors have been securely fitted.

**IMPORTANT** - The element has been coated with a protective film which will burn off during the first few minutes of use and may cause a small amount of fuming. This is quite normal, the fumes are non-toxic and will quickly disappear. We recommend that you open a window to ventilate the room when using the heater for the first time.

To energise the heater simply plug it in. You will hear an audible beep and the Standby button will illuminate red. This indicates the appliance is energised and ready for use.

## Positioning the Heater

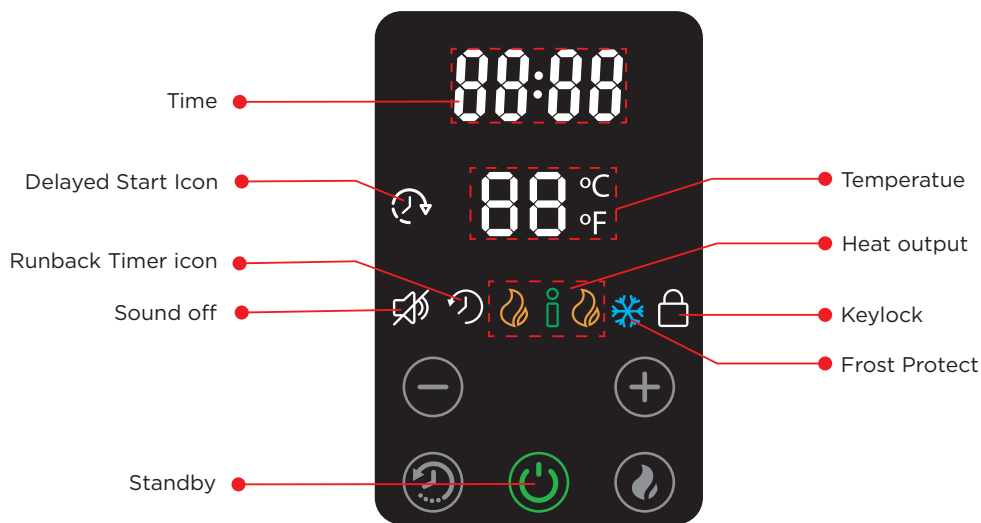
**WARNING** - Always ensure the information outlined in IMPORTANT SAFETY INFORMATION section is strictly adhered to.

Always ensure that the heater is stood on a firm, level base near to, but not directly underneath a suitable mains supply socket.

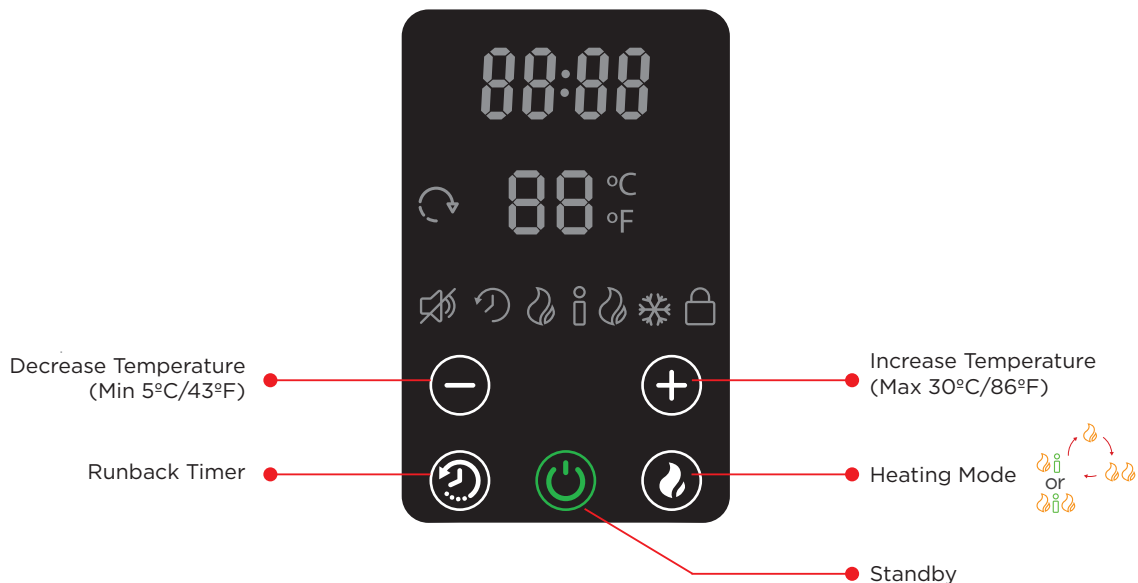
Select the position for the heater ensuring there is clearance from any furniture and fittings of at least 300mm above the heater and 150mm each side and 300mm from the control and end panel. We recommend maximising the clearance where possible.

## Screen & Controls Buttons

### Screen



### Buttons



## Standby & Power Up

When the appliance is plugged in there will be an audible beep and the unit will enter 'Standby' mode. Standby mode is an inactive mode where the appliance is energised but will not emit any heat. The Standby mode is identified by a blank display with only the Standby icon illuminated red, as shown below.

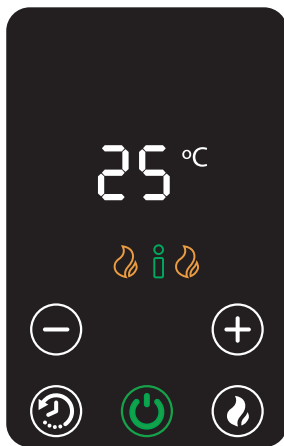


Press the **Standby** button to turn the product **On**

First Time Start Up?

### YES

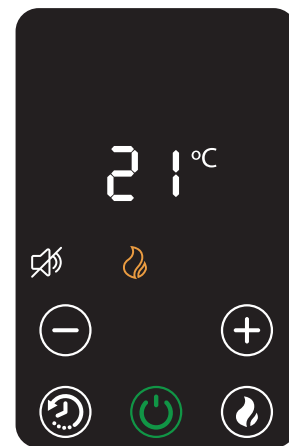
On first time start-up the product will start with the default settings. The temperature will be set to 25°C and the heat setting will be set to intelligent (Eco) heat mode, see Heat Selection.



### NO

On subsequent start-ups the product will return to the last used settings. Heat Selection, Temperature Settings, Temperature units and Sound settings will return as per the previous operation.

The screen below shows an example where the last operation settings were with the temperature set to 21°C and Heat Selection to LOW and the sound was turned off.



## Screen & Button Sleep Mode

If no buttons have been pressed for approximately 20 seconds, the display screen and buttons will enter sleep mode, all buttons except the Standby will disappear. Selected screen icons will remain visible to indicate the active mode but the brightness of the screen icons will dim 50%. To reactivate buttons, place your hand on the display.

The appliance will continue to function as required once the unit is in sleep mode.

## Operational Modes


The appliance has the following operational modes:

- **Manual mode**, this is a continuous active heating mode. It is possible to select a heat output and a desired room temperature, the appliance will continue to control the room until the mode is changed, the appliance is plugged out.
- **Runback Timer mode**, this is a time limited heating mode. The appliance will operate with the heat selection and temperature for the duration selected. Once the time has elapsed the appliance will enter Standby mode.
- **Delayed Start mode**, this mode ensures the appliance will remain in Standby mode for a predetermined period of time and will then automatically start using the last used heat settings.

**Note** - for Runback and delayed start operation, it is possible to select between One and Twelve hours in intervals of One hour.

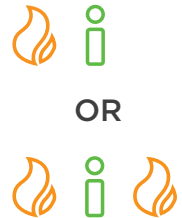
## Programming

### Heat selection

There are three heat selecting modes to choose from, these can be selected at any point during operation. To set/change the heat mode press the Heat Selection button  while in an active heating mode.

The available heat modes are:

**Intelligent (Eco) Heat** - The product will automatically regulate the output power depending on requirements. In this mode the product operates at full power, however the output of the product is automatically reduced and regulated as the room temperature approaches the desired level. This mode optimises energy use by calculating the most efficient and effective way to achieve the desired temperature setting. The desired room temperature can be adjusted at any time during operation by pressing the appropriate button.



OR

**Low Heat** - In this mode, the appliance will operate at a low heat setting, the appliance will automatically cycle at this setting to achieve and maintain the desired room temperature.



**High Heat** - In this mode, the appliance will operate at a high heat setting, the appliance will automatically cycle at this setting to achieve and maintain the desired room temperature.



	Heat settings		
	Low (kW)	High (kW)	Eco (kW)
FutM2CE	1.0	2.0	1.0 or 2.0
FutM3CE	1.5	3.0	1.5 or 3.0

### Setting the 'Desired' Room Temperature

The temperature is set using the temperature increase **+** and temperature decrease **-** buttons. The room temperature can be set in the range between 5°C to 30°C. Please note the temperature indicated on the display represents the desired room temperature. It does not display the actual room temperature. The temperature can be adjusted at any point during the operation.

**Note** - If the temperature set is lower than the room temperature then the product will not emit heat. The temperature display will be flashing to indicate this. The product is still actively controlling the room temperature and will automatically turn back on if additional heat is required, i.e. the room temperature lowers or the set temperature is increased higher than the room temperature.

## Manual Mode Setup

Manual mode is the default operational mode. To activate manual mode:

- From the Standby screen press the standby button '⏻'. the appliance will automatically enter manual mode with the default or last used settings.
- To alter the temperature use the '+' & '-' keys as required, the heat mode settings can also be adjusted using the '🔥' key.

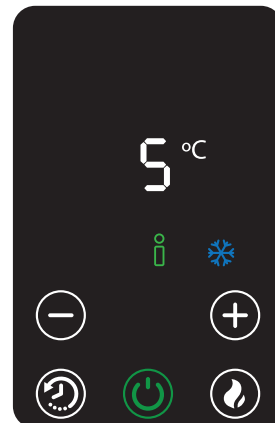
## Frost protection mode

Within the manual mode the appliance has a frost protection function. This setting is useful in areas such as garages to assist in the prevention of frost damage.

To activate this mode, set the temperature to its minimum setting '5°C', the frost protection symbol (❄️) will illuminate. When set, the heater will cycle ON and OFF to try to maintain a temperature of approximately 5°C and help protect against frost conditions.

It is normal for the 5°C to be flashing when this mode is active, it will stop flashing once heat is required e.g. if the room temperature drops below 5°C.

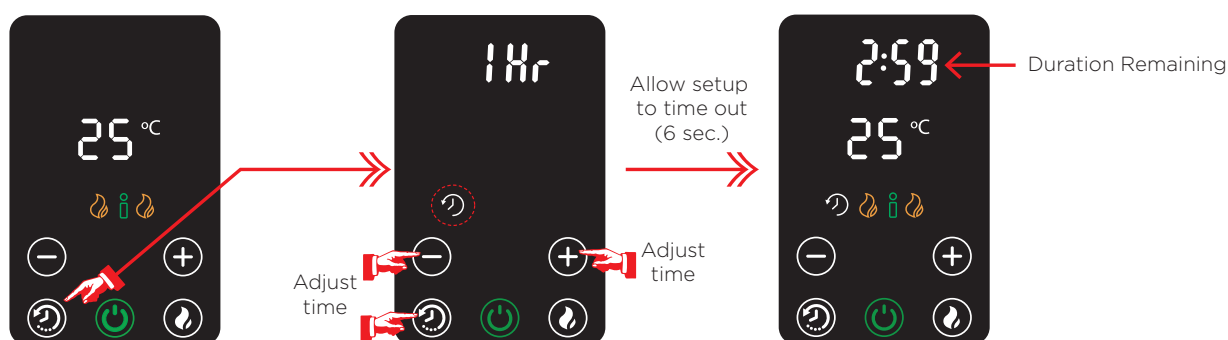
**Note** - This appliance cannot guarantee total frost protection, external factors such as room size, outside temperature, room insulation properties, etc. will impact on the reliability of this mode.



## Runback Timer Mode Setup

To set Runback Timer:

- Press the Runback button '🔄'. The Runback icon '🔄' will begin to flash on the screen and the default runback duration of 1Hr (1 hour) will also appear.
- The runback duration can be increased using the Runback button '🔄' or alternatively using the '+' and '-' buttons.
- To accept and set the timer simply allow the setup mode to time-out (approximately 6 seconds after the last button press).
- The Runback icon will stop flashing and be displayed solid on the screen. The runback duration count down time will be displayed on the screen.
- To cancel the Runback mode setup press the standby button while the icon is blinking.



## Adjusting or Cancelling the Timer:

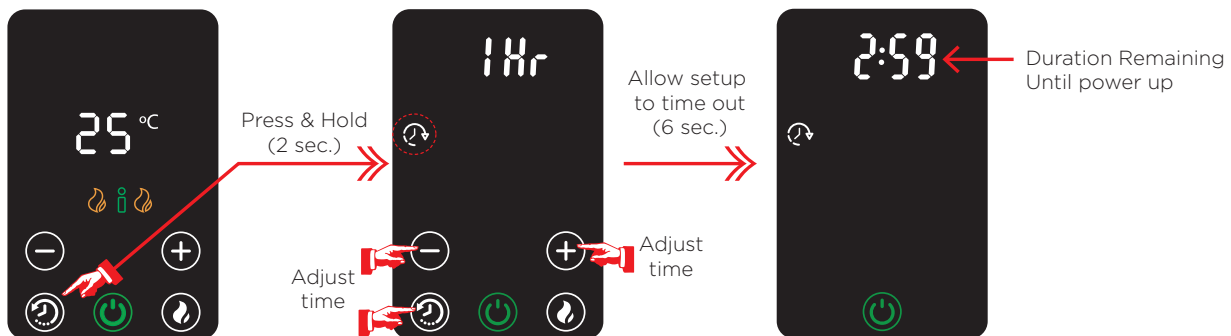
- To adjust the remaining runback time press the Runback button '🔄', the time can then be edited as per the setup process.
- To cancel the runback Timer press the Runback button '🔄' to enter the setup menu and use the '-' button to change the Runback time to 0Hr or alternatively press the Standby button while the setup mode is active.



## Delayed Start Timer Setup

To setup a delayed start timer:

- First set the Heat mode and Temperature you wish the appliance to operate after the delayed start period.
- Press and hold the Runback button '⌚' for 2 seconds. The delayed start icon '⌚' will begin to flash on the screen and the default delayed start duration of 1Hr (1 hour) will also appear.
- The Delayed Start duration can be increased using the Runback button '⌚' or alternatively using the '+' and '-' buttons.
- To accept and set the Delayed start timer simply allow the setup mode to time-out (approximately 6 seconds after the last button press).
- The Delayed start icon will stop flashing and be displayed solid on the screen. The Delayed start duration count down time will be displayed on the screen.
- To cancel the Delayed start setup press the standby button while the icon is blinking.
- The appliance will not emit heat until the countdown clock reaches 00:00, the appliance will automatically switch on using the settings set before the Delayed start mode was setup.



## Cancelling the Delayed Start Timer:

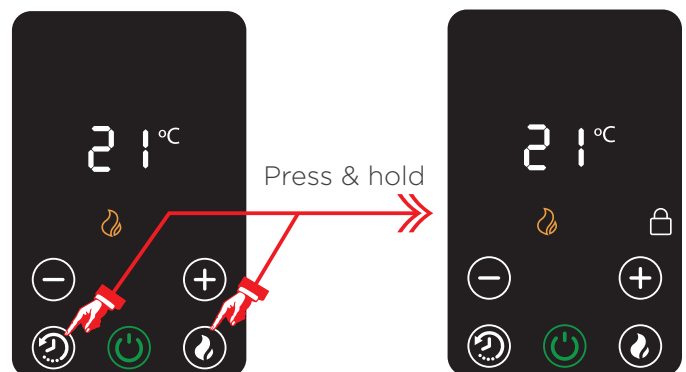
- To cancel the Delayed Start Timer simply press the Standby button '⏻' the appliance will enter Standby mode,
- Press the Standby button again to reactivate the appliance.

## Key Lock

To activate the key lock:

- Press and hold both '⌚' and '🔥' buttons together for 2 seconds.
- The Key Lock icon '🔒' will appear on the display.
- To unlock the control repeat the action by pressing both '⌚' and '🔥' buttons for 2 seconds.

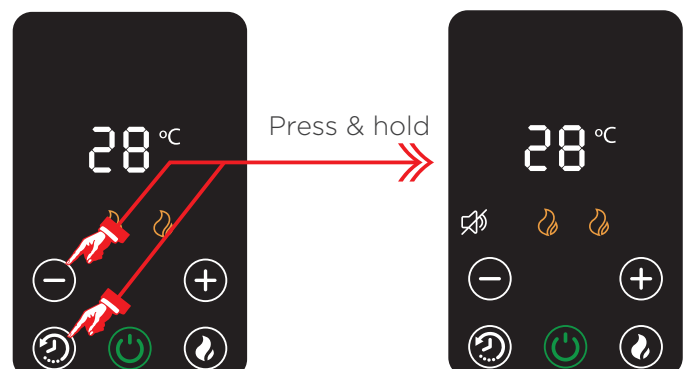
Note: The Standby button will still work when the Key Lock is active. If the standby button is used again to reenergise the appliance then the last heat settings and key lock will still be active.



## Key Tone Mute

To mute the key tones:

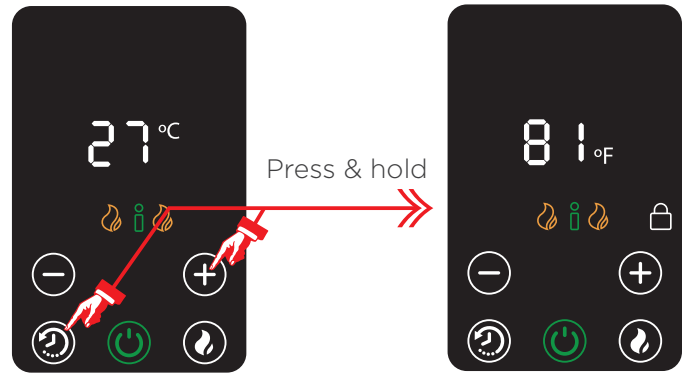
- Press and hold '⌚' and '-' buttons together for 2 seconds.
- The 'sound off' 🚫 Icon will appear on screen
- To turn on the sound, repeat the action.



## Temperature Units

To switch temperature from degrees Celsius to degrees Fahrenheit:

- Press and hold '🔄' and '+' buttons together for 2 seconds.
- The temperature units on the display will change to degrees Fahrenheit.
- To revert to degrees Celsius, repeat the button press outlined above.



## Safety Features & Additional Information

This appliance incorporates a number of safety devices. In addition to the 'Important Safety Advice' section your attention is drawn to the following:

### Tilt Switch

The tilt switch will prevent the heater from working if it is accidentally tipped over on its side.

If the radiator is tipped over while it is hot, disconnect the power and allow it to cool, then stand the radiator back upright. Reconnect the power - normal operation should be resumed.

Note: The tilt switch mechanism makes a muted rattling noise when the product is moved or tilted, this is not a fault, this noise is normal.

### Safety Overheat Protection

The heater is fitted with a temperature limiter which will reduce the output of the heater should it overheat for any reason. The product will return to normal operation after the cause of the over heating has been rectified.

### Storage

If the radiator is not required for long periods, for example during the summer, it should be stored in a dry place and preferably covered to prevent the accumulation of dirt and dust. The supply cord should be neatly coiled and placed inside the cable storage box.

### Cleaning

**WARNING - ALWAYS DISCONNECT THE POWER SUPPLY BEFORE CLEANING THE HEATER.**

Do not use detergents, abrasive cleaning powder or polish of any kind on the body of the heater.

Allow the heater to cool, then wipe with a dry cloth to remove dust and a damp cloth (not wet) to clean off stains. Be careful not to allow moisture in to the heater.

### Recycling



For electrical products sold within the European Community.

At the end of the electrical products useful life it should not be disposed of with household waste. Please recycle where facilities exist. Check with your Local Authority or retailer for recycling advice in your country. If you don't intend to keep

the packaging of this product for later use or storage, please dispose of it in an eco-friendly way, please dispose of it in your recycling bin or nearest recycling facility, thank you.

Model Identifier(s):		FutM2CE	FutM3CE	
Heat output				
Nominal heat output	Pnom	2.0	3.0	kW
Minimum heat output (indicative)	Pmin	1.0	1.5	kW
Maximum continuous heat output	Pmax,c	2.0	3.0	kW
Auxiliary electricity Consumption				
At nominal heat output	elmax	0.0	0.0	kW
At minimum heat output	elmin	0.0	0.0	kW
In standby mode	eISB	0.0005	0.0005	kW
Type of heat output/ room temperature control				
With electronic room temperature control				Yes
Contact details		<b>UK:</b> Glen Dimplex UK Ltd., Millbrook House, Grange Drive, Hedge End, Southampton SO30 2DF <b>ROI:</b> Glen Dimplex Europe Limited, Airport Road, Cloghran, County Dublin, K67 VE08		

## Guarantee

### What does a Dimplex Guarantee cover?

Dimplex products deliver reliable service for normal, household use in domestic settings. All Dimplex products are individually tested before leaving the factory.

If you are a consumer and you experience a problem with your Dimplex product, which is found to be defective due to faulty materials or workmanship within the Guarantee Period, this Dimplex Guarantee will cover repair or - at the discretion of Dimplex - replacement with a functionally equivalent Dimplex product.

Your product is under Guarantee for 1 year from the date of purchase or the date of delivery of the product, if later. The 1 year Guarantee is extended for an additional 4 years when you register the product with Dimplex, within 28 days of purchase. If you do not register the product with Dimplex within 28 days, your product will remain warrantied for 1 year only. To validate your extended Guarantee register with us online at: <http://register.dimplex.co.uk>. **N.B.** Each qualifying product needs to be registered with Dimplex individually. Please note that the extended Guarantee is only available in the UK and Ireland.

The Dimplex Guarantee is conditional upon you providing the original purchase receipt as proof of purchase. Please therefore retain your receipt as proof of purchase.

If you do experience a problem with your Dimplex product please call the Helpline on +44 [0]344 879 3588 or visit <https://www.dimplex.co.uk/support>. For ROI please email [serviceireland@glendimplex.com](mailto:serviceireland@glendimplex.com) or call +353(0)1 842 4833. We will need details of your Dimplex product and a description of the fault which has occurred. Once we receive your information and proof of purchase we will contact you to make the necessary arrangements. If your Dimplex product is not covered by this Dimplex Guarantee there may be a charge to repair your product. However, we will contact you for agreement to any charges before any chargeable service is carried out.

### What is not covered by a Dimplex Guarantee?

The Dimplex Guarantee does not cover any of the following:

Any fault or damage to your Dimplex product due to faulty materials or workmanship occurring outside the Guarantee Period. Normal wear and tear including parts that might wear out over time or consumables, such as filters, batteries, etc.

Any fault or damage occurring to any pre-owned Dimplex product or to any other equipment or property.

Accidental damage to your Dimplex product or damage to your Dimplex product from external sources (for example, transit, weather, electrical outages or power surges).

Fault or damage to your Dimplex product which is:

- Not due to faulty materials or workmanship or which is due to circumstances outside Dimplex's control.
- Caused by use of your Dimplex product for anything other than normal domestic household purposes in the country where it was purchased.

- Caused by any misuse, abuse or negligent use of the Dimplex product, including but not limited to any failure to use it in accordance with the Operating Instructions supplied with the product.
- Caused by any failure to assemble, install clean and maintain your Dimplex product in accordance with the Operating Instructions supplied with the product unless this was carried out by Dimplex or its authorised dealers.
- Caused by repairs or alterations to your Dimplex product not carried out by Dimplex service personnel or its authorised dealer(s).
- Caused by use of any consumables or spare parts for your Dimplex product which are not Dimplex - specified.

## Terms and Conditions

The Dimplex Guarantee is valid for 1 calendar year, plus 4 if registered, from the date of purchase of your Dimplex product from a recognised retailer in the country of purchase and use, or the date of delivery of the product if later, always provided the original receipt has been retained and is produced as proof of purchase.

You must provide to Dimplex or its authorised agents on request the original receipt as proof of purchase and - if required by Dimplex - proof of delivery. If you are unable to provide this documentation, you will be required to pay for any repair work required.

Any repair work under the Dimplex Guarantee will be carried out by Dimplex or its authorised dealer(s) and any parts that are replaced will become the property of Dimplex. Any repairs or replacement performed under the Dimplex Guarantee will not extend the Guarantee Period.

The Dimplex Guarantee does not entitle you to recovery of any indirect or consequential loss or damage including but not limited to loss or damage to any other property.

The Dimplex Guarantee is in addition to your statutory rights as a consumer and your statutory rights are not affected by this Dimplex Guarantee.

## Contact Dimplex

A brand of the Glen Dimplex UK Limited, trading as Glen Dimplex Heating & Ventilation

If you have any questions about what the Dimplex Guarantee covers and does not cover or how to claim under the Dimplex Guarantee, please contact us:

Glen Dimplex Heating & Ventilation, Grange Drive, Hedge End, Southampton SO30 2DF,

Telephone: 0344 879 3588

Visit: [www.dimplex.co.uk](http://www.dimplex.co.uk)