



Meaco 12L and 20L Low Energy Dehumidifier/Air Purifier Instruction Manual



Meaco 12L and 20L Low Energy Dehumidifier/Air Purifier

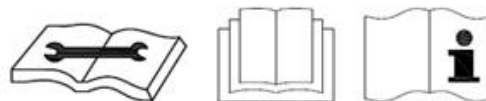
Please read this instruction manual before using the dehumidifier and keep safe for future reference.

Thank you for choosing Meaco, we really appreciate it.

SAFTEY INFORMATION

This dehumidifier must not be used in rooms under the following conditions:

- *Potentially explosive atmosphere*
- *Aggressive atmospheres*
- *Featuring a high concentration of solvents*
- *An extremely high ratio of dust*



Keep Children Away: Do not allow children to play with or around this unit, which could result in injury. Be sure the unit is inaccessible to children when not attended. This appliance is not intended for use by person (including children) with reduced physical, sensory or mental capabilities, or lack of experience and knowledge, unless they have been given supervision or instruction concerning use of the appliances by a person responsible for their safety.

Keep Unit Grounded: Always operate the unit with a grounding plug and a grounded electrical outlet. A grounding plug is an essential safety feature that helps reduce the risk of shock or fire.

Protect Power Cord from Damage: Never operate a unit with a damaged power cord, as this may lead to electrical or fire hazards. If the power supply cord is damaged, it must be replaced by a cord of the same type and amperage rating.

Extension Cords: Extension cords must be grounded and able to deliver the appropriate voltages to the unit.

Handle with Care: Do not drop, throw or crash the dehumidifier. Rough treatment can damage the components or wiring and create a hazardous condition.

Run on Stable Surface: Always operate the unit on a stable, level surface, for example the floor or a strong counter, so that the dehumidifier cannot fall and cause injury.

Keep Out of Water: Never operate the unit in pooled or standing water, as this may create a risk of injury from electrical shock. Do not store or operate outdoors. If electrical wiring or components become wet, thoroughly dry them before using the unit. If in doubt do not use the dehumidifier and consult a qualified electrician or a Meaco approved engineer.

Do Not Let Water Drip onto the Dehumidifier: Dry your bathroom by placing the dehumidifier outside of the room with the bathroom door open. Do not use your dehumidifier inside the bathroom.

Keep Air Intakes Clear: Do not clog or block the air intakes by placing the dehumidifier too close to curtains, walls or anything that will restrict the air inlet. This may cause the unit to overheat and result in a fire or electrical hazard.

Keep the Filter Clean: There is a filter on the air inlet to stop dust from getting inside the dehumidifier. If you allow the dust and dirt to build up on the filter, pressure on the fan motor will be increased and you will reduce the amount of water extracted from the air. Not cleaning the filter reduces the lifespan of the dehumidifier, increases energy consumption and decreases water extraction. Please examine and clean the filter every two weeks minimum.

Keep Electrical Components Dry: Never allow water inside the dehumidifier's electrical components. If these areas become wet for any reason, thoroughly dry them before using the dehumidifier. If in doubt, do not use the dehumidifier and consult a qualified electrician or a Meaco approved engineer.

The operator must make the operating instruction available for the user and make sure that the user does understand the manual.



Both the Meaco 12L Low Energy Dehumidifier and the Meaco 20L Low Energy Dehumidifier use the new R290 refrigerant gas to comply with European Environmental Directives. R290 is kinder to the environment and is part of attempts to reduce global warming as it has a low greenhouse effect (GWP).

When using either the Meaco 12L Low Energy Dehumidifier or the Meaco 20L Low Energy Dehumidifier you must take into account the following:

- This dehumidifier uses about 35 grams of R290 refrigerant in the 12L model and 75 grams of R290 refrigerant in the 20L model, which is flammable. Therefore, it is part of a sealed system and must only be serviced by a trained Meaco engineer.
- Do not use or store this dehumidifier in a room smaller than 4m² to prevent a fire or explosion hazard if there is a leak of refrigerant and the gas comes into contact with an ignition source.
- Do not use in a room with any continuous sources of ignition, for example open flames, gas fires or hobs, cigarettes or any other sources of ignition.
- If the dehumidifier is installed, operated or stored in a non-ventilated area, then the room must be designed to prevent the accumulation of refrigerant leaks resulting in a risk of fire or explosion due to ignition of the refrigerant caused by electric heaters, cookers, or other sources of ignition.
- R290 refrigerant gas is odourless.
- Do not puncture either during the units working life or after. At the end of life dispose of following local recycling regulations.
- If there is any damage to the unit then do not use it and contact Meaco or your retailer.
- As with all dehumidifiers, always keep upright and leave the dehumidifier standing upright for 3-4 hours before using it upon receipt.



Failure to comply with these instructions could result in fire, damage to property, serious injury or potentially death.

Individuals who operate or work on the refrigerant circuit must have the appropriate certification issued by a national accredited organisation that ensures competence in handling flammable refrigerants according to a specific evaluation recognised by national associations in the industry and compliant with the latest R290 guidance.

Servicing should only be carried out by a Meaco approved engineer using original Meaco parts to prevent damage to the unit and potential injury to the engineer.

WIRING INSTRUCTIONS


Should it be necessary to change the plug, please note the wires in the mains lead are coloured in accordance with the following code:

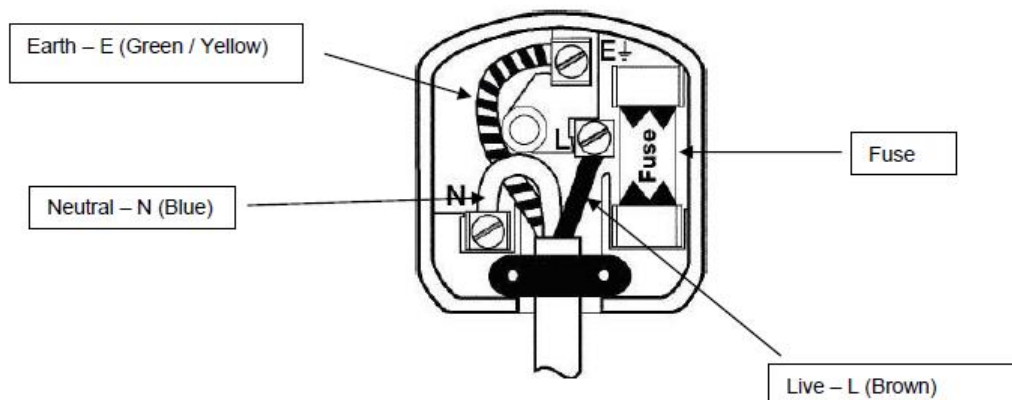
BLUE – NEUTRAL
BROWN – LIVE
GREEN AND YELLOW – EARTH

As the colours of the wires in the mains lead of this appliance may not correspond with the coloured markings identifying the terminals in your plug, proceed as follows:

1. The **BLUE** wire is the NEUTRAL and must be connected to the terminal which is marked with the letter N or coloured **BLACK**.
2. The **BROWN** wire is the LIVE and must be connected to the terminal which is marked with the letter L or coloured **RED**.
3. The **GREEN/YELLOW** is the EARTH and must be connected to the terminal which is marked with the letter E or coloured **GREEN** or **GREEN/YELLOW**.
4. Always ensure that the cord grip is positioned and fastened correctly.
5. Only ever use the same fuse as fitted in the original product, if in doubt please contact Meaco first, or a qualified electrician.

Example wiring for a Standard British Plug:

Please note: The Earth Terminal is marked with the letter E or Earth Symbol .



GENERAL ADVICE

- Before putting your dehumidifier into operation for the first time, the instruction manual should be studied carefully.
- After receiving the unit, you should check your dehumidifier for any transport damage. In case of damage, you should inform the sender immediately.
- Store the dehumidifier box and packaging in a safe place – this will be required if the dehumidifier requires a service in the future. In order to save space, you can simply cut through the adhesive tape using a knife and fold up the cardboard box.

DEHUMIDIFIER PRINCIPLES

This dehumidifier is designed to reduce humidity from the air in a building or part of a building. The purpose is to help dry laundry, prevent condensation, mould, musty air and other issues associated with high relative humidity.

The time necessary for the dehumidifier to dry a room and reach the desired relative humidity depends on the environmental conditions prevailing within the room. For example, the number of air changes with outside, any sources of moisture, and the room temperature can all either speed up or slow down the dehumidification process.

The dehumidifier functions according to the condensation principles with heat recovery. The fan takes the humid air from the room, in and across a filter, and then through an evaporator. Here the air is cooled below dew point, so that the water vapour of the air forms a condensate on the coils, which flows into the internal container ready to be poured away. The cooled and dried air is heated again by a condenser. By recycling the room air through the dehumidifier repeatedly, the moisture content and relative humidity of the air is reduced.

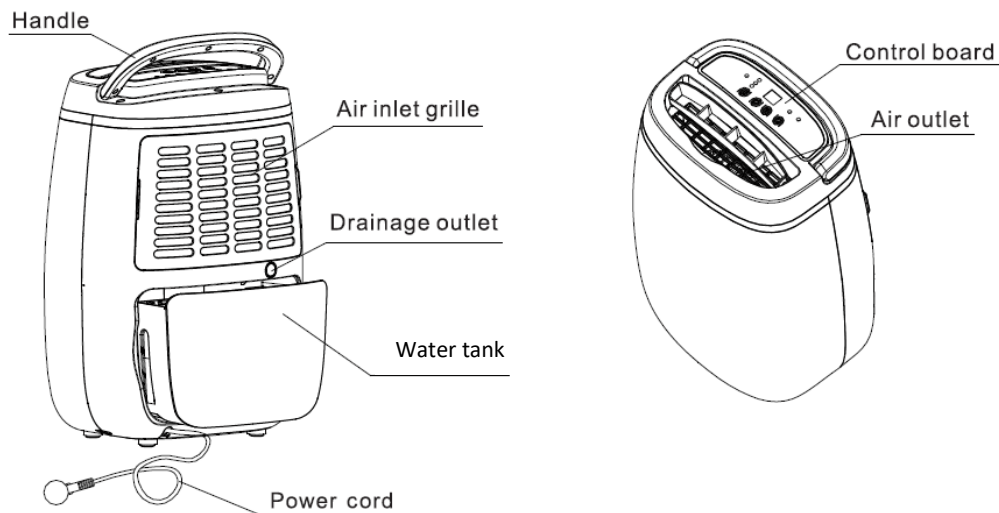
INSTALLATION AND TRANSPORTATION

For installation and transportation, the following instructions must be considered:

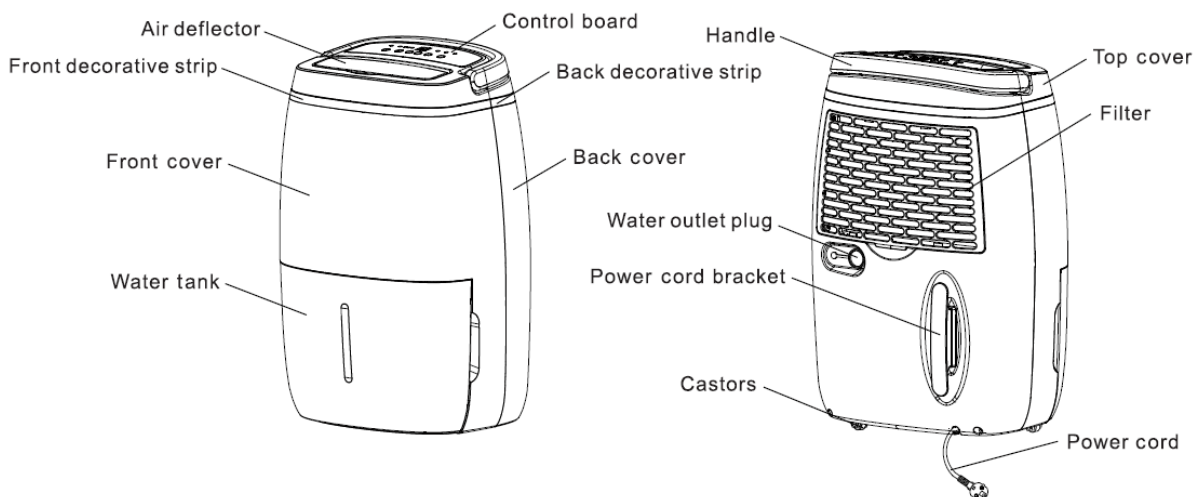
- Before using the dehumidifier, leave it to stand upright for 4 hours.
- Plug the unit directly into a wall socket and switch on using the ON/OFF button on the unit.
- Ensure there is at least 30cm of space around the unit to enable adequate air flow. The air inlet and the air outlet must not be covered whilst the dehumidifier is in operation.
- Make sure the water tank is securely in place. The unit will not switch on unless the water tank is secure.
- If you need to move the dehumidifier, it must be switched off by its ON/OFF switch on the unit. The mains plug must be removed from the socket and the water tank should be emptied.
- For transportation, the dehumidifier should be secured on a level base only and must be prevented from rolling around.
- The dehumidifier must always be transported vertically – if the dehumidifier has been in a horizontal position for any time over a few minutes, you must let it stand in the upright position for at least 30 minutes before operating. This allows the oil to drain back into the compressor.

PRODUCT IDENTIFICATION

12L LOW ENERGY DEHUMIDIFIER/AIR PURIFIER



20L LOW ENERGY DEHUMIDIFIER/AIR PURIFIER



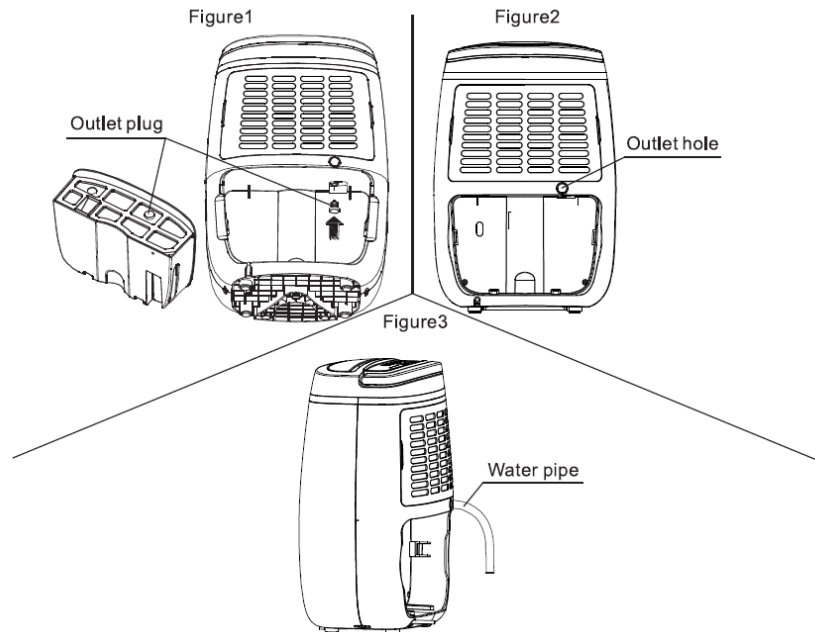
As a company we understand the urgency of Climate Change and recognise how important it is to play our part in becoming more environmentally friendly. For this reason, we have stopped including continuous drainage hoses in our dehumidifiers to reduce the amount of plastic waste created, as most of our customers do not use them. If you would like to use the continuous drainage option on your dehumidifier, you can either purchase a hose from our website (www.meaco.com) or use a garden hose that has an internal diameter of 12mm (12L Low Energy) or 14mm (20L Low Energy).



HOW TO USE CONTINUOUS DRAINAGE

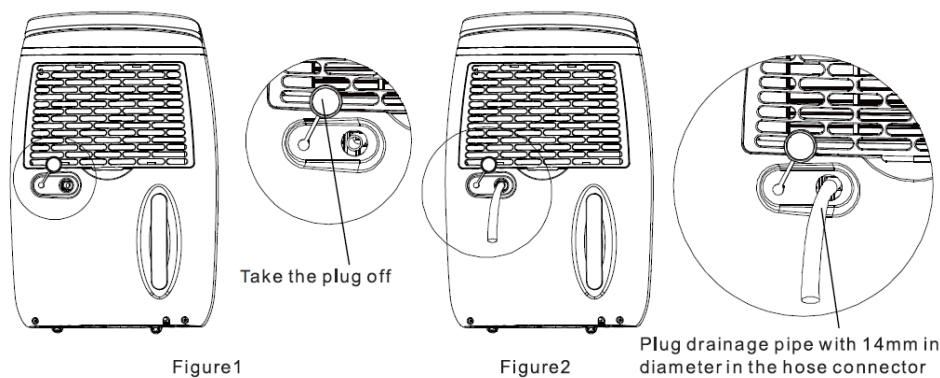
If you wish to drain water away continuously and not empty the water tank, a hose can be attached as per the images below. Make sure the hose runs downwards, with no kinks, bends or blockages, to allow water to run out of the unit via gravity.

12L LOW ENERGY DEHUMIDIFIER/AIR PURIFIER



In order to use continuous drainage, remove the water tank from the unit. Remove the rubber bung from the water tank and insert it into the spout which drips into the water tank. Snip the circular disc on the back of the unit (to the bottom right of the filter) and push the 12mm hose through the hole securing it to the internal outlet pipe. Once the hose is in place, put the water tank back into the unit (for continuous drainage to work, the water tank must always be in place).

20L LOW ENERGY DEHUMIDIFIER/AIR PURIFIER

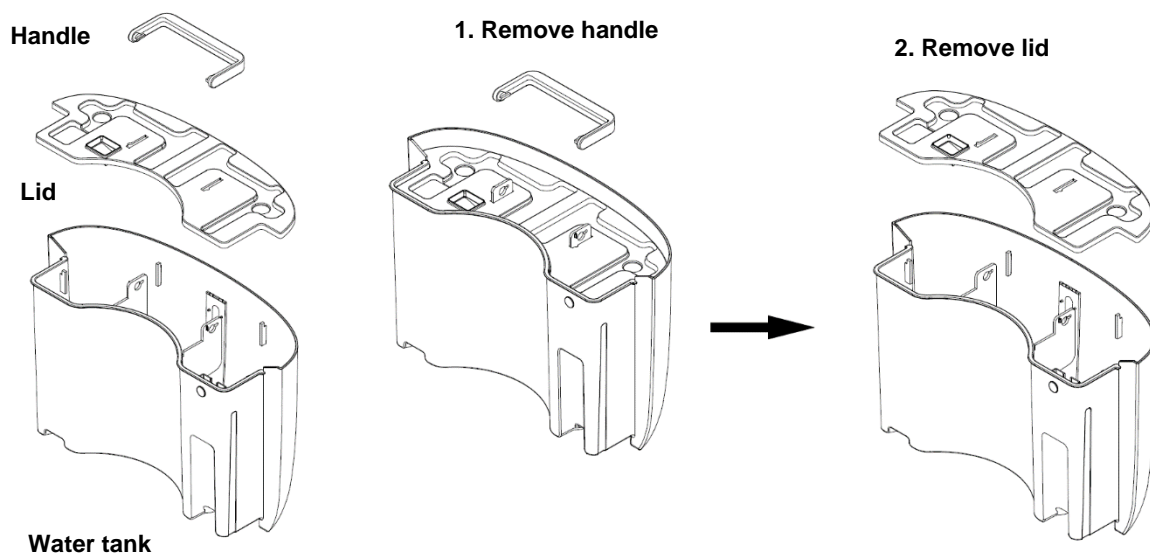


In order to use continuous drainage, take the plug off the back of the unit and push the 14mm hose through the hole securing it to the internal outlet pipe (for continuous drainage to work, the water tank must always be in place).

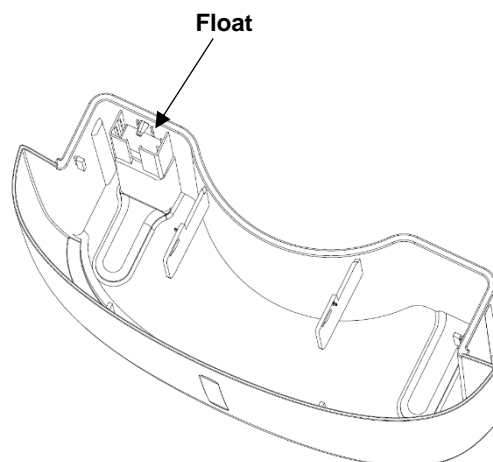
HOW TO EMPTY THE WATER TANK

The water tank is found on the front of the unit on the 20L model and at the back of the unit on the 12L model. In order to empty the water tank, simply pull the tank out from the unit and empty the water. The lid does not need to be removed as the water can be poured out of the hole at the corner. The water collected can be used to water non-edible plants only – do not consume.

If you want to clean the inside of the 20L Low Energy water tank, the lid needs to be removed via the handle. Turn the handle to align the handle grooves with the circular holes on the water tank. Gently squeeze both sides of the handle inwards and lift the handle clear. You will then be able to remove the water tank lid.



Please note, located inside the water tank is a float. It is essential this float is NOT removed from the water tank. The float measures the level of water in the water tank and triggers the sensor to turn the dehumidifier off when the water tank is full.



CONTROL PANELS

12L LOW ENERGY DEHUMIDIFIER/AIR PURIFIER



ON/OFF BUTTON



When the dehumidifier is plugged into a wall socket, the dehumidifier will beep and the display will remain blank. Press the ON/OFF button to turn the dehumidifier on or off.

UP AND DOWN ARROWS (use to set target humidity level)



The UP and DOWN arrows can be used to select a target relative humidity between 30%rh and 80%rh, CO mode or AP mode. Press the UP or DOWN arrow until you reach your desired target relative humidity. The dehumidifier will run until the target humidity level has been reached. If you choose CO mode, the dehumidifier will run continuously and never stop. If you choose AP mode, the dehumidifier will just purify the air and not collect any water.



The UP arrow will go through the settings in the following order: AP-CO-30-35-40-45-50-55-60-65-70-75-80.

The DOWN arrow will go through the settings in the following order: 80-75-70-65-60-55-50-45-40-35-30-CO-AP.

OFF TIMER BUTTON



The OFF Timer acts as a countdown timer. This can be used if you want the dehumidifier to run for a set number of hours and then switch off. Press the OFF-Timer button and then use the UP and DOWN arrows until you reach the desired number of hours you want the dehumidifier to run for (it can be set between 1 and 12 hours). This is not a daily run timer and needs to be set each time you wish to use it.

DEHUMIDIFICATION LIGHT



The LED light under the droplet stays on permanently, even once the dehumidifier has reached its target humidity level.

DEFROST MODE



This dehumidifier is equipped with an automatic defrosting system. When operating in low temperatures, the surface of the evaporator will accumulate frost which effects the efficiency of the dehumidifier. When this happens, the machine will automatically go into periodic defrosting and the LED light beneath the snowflake symbol will appear. The time the unit is in defrost mode will vary. This is not a fault; it is part of the dehumidification process. It is not recommended to use the dehumidifier in temperatures below 5°C.

WATER TANK FULL INDICATOR



When the water tank is full the dehumidifier will beep multiple times and then switch off. Once the water tank has been emptied and placed securely back in the dehumidifier, the dehumidifier will start to run again as per its previous settings.

CHILD LOCK



Press both the UP and DOWN arrows at the same time for three seconds to activate child lock, LC will appear on the display. This stops the functions of the dehumidifier from being changed. The dehumidifier cannot be turned off when child lock is activated. To deactivate child lock, press the UP and DOWN arrows at the same time again for three seconds.

LOUVRE

The louvre can be manually adjusted and must always be kept open when the dehumidifier is in use. When using the dehumidifier to dry laundry, we recommend using the louvre to direct the airflow towards the laundry. Please note, the wider the angle the louvre is adjusted to, the less noise the dehumidifier will make.

READINGS ON THE DISPLAY

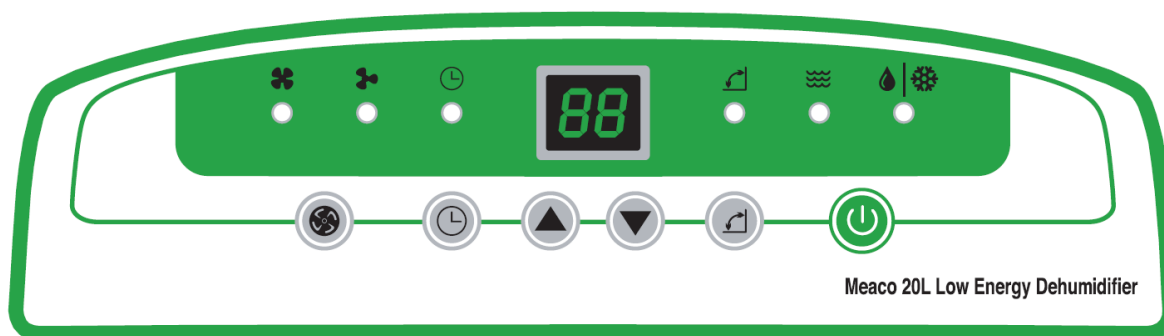
When the dehumidifier is switched ON, the reading on the display will show the **current relative humidity level in the environment** the dehumidifier is being used in.

When the DOWN arrow is pressed once, the display will show the mode the dehumidifier is set to, for example, it will either show the **target humidity level set**, AP or CO. We recommend setting the dehumidifier to reach a target humidity level of 50%rh or 55%rh. After two seconds the display will then revert to the currently relative humidity level in the environment. For more information of AP or CO mode, see page 13.



Once the target humidity level has been reached (is more than 3% below) the dehumidifier will go to sleep for half an hour and the reading on the display may increase significantly, this is because the dehumidifier is reading its internal humidity level, it is not showing the external relative humidity level in the environment (see page 14 for more information).

20L LOW ENERGY DEHUMIDIFIER/AIR PURIFIER



ON/OFF BUTTON

When the dehumidifier is plugged into a wall socket, the dehumidifier will beep and the display will remain blank. Press the ON/OFF button to turn the dehumidifier on or off.

UP AND DOWN ARROWS (use to set target humidity level)



The UP and DOWN arrows can be used to select a target relative humidity between 30%rh and 80%rh, CO mode or AP mode. Press the UP or DOWN arrow until you reach your desired target relative humidity. The dehumidifier will run until the target humidity level has been reached. If you choose CO mode, the dehumidifier will run continuously and never stop. If you choose AP mode, the dehumidifier will just purify the air and not collect any water.



The UP arrow will go through the settings in the following order: AP-CO-30-35-40-45-50-55-60-65-70-75-80.

The DOWN arrow will go through the settings in the following order: 80-75-70-65-60-55-50-45-40-35-30-CO-AP.



OFF TIMER BUTTON

The OFF Timer acts as a countdown timer. This can be used if you want the dehumidifier to run for a set number of hours and then switch off. Press the OFF-Timer button and then use the UP and DOWN arrows until you reach the desired number of hours you want the dehumidifier to run for (it can be set between 1 and 12 hours). This is not a daily run timer and needs to be set each time you wish to use it.



FAN SPEED BUTTON

Press the Fan Speed button to choose between one of two different fan speeds: low, and high. The LED lights on the display underneath the two fan icons will change highlighting the fan speed currently in use. The icon on the left of the display is high fan speed, the icon on the right is low fan speed.



LOUVRE SWING BUTTON

Press the Louvre Swing button to turn the swing mode on or off. When switched on, the LED light will show, and the louvre will automatically move up and down distributing the air evenly. When the louvre swing is switched off, the louvre can be moved into a fixed position manually in order to direct the airflow. It must always be kept open when the dehumidifier is switched on.



DEHUMIDIFICATION LIGHT

The LED light under the droplet and snowflake will stay on permanently, even once the dehumidifier has reached its target humidity level. This light will be solid, it will not flash. If the light is flashing, it is in defrost mode.



DEFROST MODE

This dehumidifier is equipped with an automatic defrosting system. When operating in low temperatures, the surface of the evaporator will accumulate frost which effects the efficiency of the dehumidifier. When this happens, the machine will automatically go into periodic defrosting and the LED light beneath the droplet and snowflake symbol will flash. The time the unit is in defrost mode will vary. This is not a fault; it is part of the dehumidification process. It is not recommended to use the dehumidifier in temperatures below 5°C.



WATER TANK FULL INDICATOR

When the water tank is full the dehumidifier will bleep multiple times and then switch off. Once the water tank has been emptied and placed securely back in the dehumidifier, the dehumidifier will start to run again as per its previous settings.



CHILD LOCK

Press both the UP and DOWN arrows at the same time for three seconds to activate child lock, LC will appear on the display. This stops the functions of the dehumidifier from being changed. The dehumidifier cannot be turned off when child lock is activated. To deactivate child lock, press the UP and DOWN arrows at the same time again for three seconds.

READINGS ON THE DISPLAY

When the dehumidifier is switched ON, the reading on the display will show the **current relative humidity level in the environment** the dehumidifier is being used in.

When the DOWN arrow is pressed once, the display will show the mode the dehumidifier is set to, for example, it will either show the **target humidity level set**, AP or CO. We recommend setting the dehumidifier to reach a target humidity level of 50%rh or 55%rh. After two seconds the display will then revert to the currently relative humidity level in the environment. For more information of AP or CO mode, see page 13.



Once the target humidity level has been reached (is more than 3% below) the dehumidifier will go to sleep for half an hour and the reading on the display may increase significantly, this is because the dehumidifier is reading its internal humidity level, it is not showing the external relative humidity level in the environment (see page 14 for more information).

OTHER FUNCTIONS

HEPA FILTER

HEPA filters provide excellent air cleaning capabilities. If you are allergic to mould spores, pollen, dust, pet dander, dust mites etc. then a HEPA filter will help. These are True HEPA filters which mean they conform to tough international standards to ensure that they capture 99.97% of particles that have a size of 0.3µm or larger, complying to class E11. These are the best filters for cleaning the air that you can currently get on a dehumidifier.

The use of a HEPA filter effects the performance of the dehumidifier as follows:

Meaco 12L Low Energy Dehumidifier: 11% less dehumidification and 7% increase in energy consumption.

Meaco 20L Low Energy Dehumidifier: 9% less dehumidification and 5% increase in energy consumption.

If the HEPA filter is in place, regardless of the setting, all the air going through the dehumidifier will be purified. Please see page 16 for instructions on how to insert the HEPA filter.

AIR PURIFICATION (AP) MODE

The dehumidifier can be used in AP, Air Purification mode. To achieve this mode keep pressing the DOWN arrow until AP appears on the display. In this mode, the dehumidifier will not collect any water but all the air that goes through the dehumidifier will be purified of dust, dirt, bacteria and allergens. The HEPA filter must be installed.

Once the HEPA filter changes colour from white to grey, it must be replaced. Replacement HEPA filters can be purchased from www.meaco.com.

CONTINUOUS (CO) MODE

In order to achieve this mode, keep pressing the DOWN arrow until CO appears on the display. In CO mode the dehumidifier will not stop, it will continue to dry the environment regardless of the room relative humidity. This is the recommend setting for drying your laundry.

MEMORY FUNCTION / AUTO RE-START

When the dehumidifier is switched off, either by the ON/OFF button or via a power cut, when turned back on the dehumidifier will continue to run in the same settings it was previously running on.

If you wish to reset the dehumidifier to its factory default settings switch the dehumidifier off using the ON/OFF button, unplug it from the mains, wait a few minutes, plug it back into the mains and then switch the unit back on using the ON/OFF button.

MEACO CONTROL LOGIC

When the room relative humidity is more than 3%rh below your target relative humidity the dehumidifier will stop drying the air, but the fan will continue to run for a few minutes. If the relative humidity is stable, then the dehumidifier will go to sleep for 30 minutes.

During this sleep time the humidity reading on the display will probably increase well above the set point. This is because the fan is turned off and the sensor is now reading the relative humidity inside the dehumidifier where it is cold and wet. This is normal and the machine will not turn back on because this is the reading inside the dehumidifier and not the room reading.

After 30 minutes the dehumidifier will wake up and sample the air with just the fan running for 2 minutes so that the relative humidity sensor can tell the control panel what the room relative humidity is, if the relative humidity is more than 3%rh above the set point then it will start to dehumidify again, if not then the fan will go to sleep again for another 30 minutes.

WHAT MEACO RECOMMENDS

GENERAL USE IN THE HOME

For general use we recommend setting the dehumidifier to reach a target humidity level of 50%rh or 55%rh and positioning the dehumidifier in a central position within your home, for example the landing or hallway. If you have more of a problem in one area of your house/flat, place the dehumidifier closer to that area. Leave all the interior doors open and keep the windows closed. Moisture in the air, from the entire house, will migrate towards the dehumidifier allowing the machine to reduce the relative humidity level. For best results, leave your dehumidifier running 24/7.

Please note, when you first start using your dehumidifier, you may find it will run continuously, collecting a large amount of water, or struggling to reach the target humidity level. This is completely normal. There will be a lot of excess water in the environment that the dehumidifier needs to remove, meaning it must work a lot harder. After a few weeks, the humidity level will stabilise meaning your dehumidifier will run less frequently and collect less water.

DRYING LAUNDRY

To dry laundry faster, place the laundry and the dehumidifier into as small a room as possible, with all the doors and windows closed. Position the dehumidifier so that its dry air can hit as large an area of washing as possible and position the laundry so that the air can circulate around them. Make sure water from the laundry is not able to drip onto the dehumidifier. If possible, use a pedestal fan to speed up the airflow and push more dry air across more of the laundry. Some warmth in the room will also help. Set the dehumidifier to run on CO mode and the highest fan speed (please note the 12L model only has one fan speed).

MAINTENANCE

Always turn off the power and disconnect the main cable before performing maintenance procedures.

INSPECT ELECTRICAL SYSTEM

- Inspect the electrical cord for damage at regular intervals.

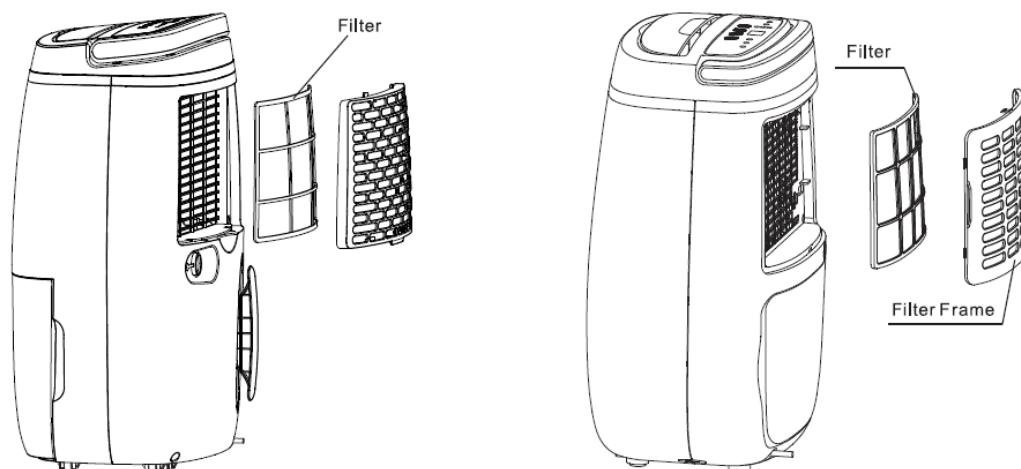
CLEANING THE EXTERIOR

- Clean the exterior with a soft, dry cloth. If the device is extremely dirty, use a mild cleaning agent or wipe the dehumidifier with a slightly damp cloth. Never spray the device with water.

CLEANING THE FILTER

The filter is a life-long filter which should not need to be replaced (other than for wear and tear reasons). When used regularly, the filter may become clogged with dust and dirt particles. The filter must be cleaned a minimum of every two weeks (not doing so could invalidate the units' warranty). Please use the following steps:

- Remove the filter (it can be found inside the fitted filter frame).
- Clean both sides of the filter with the end of a Hoover or soapy water no hotter than 40°C. Rinse and dry completely before inserting back into the dehumidifier.



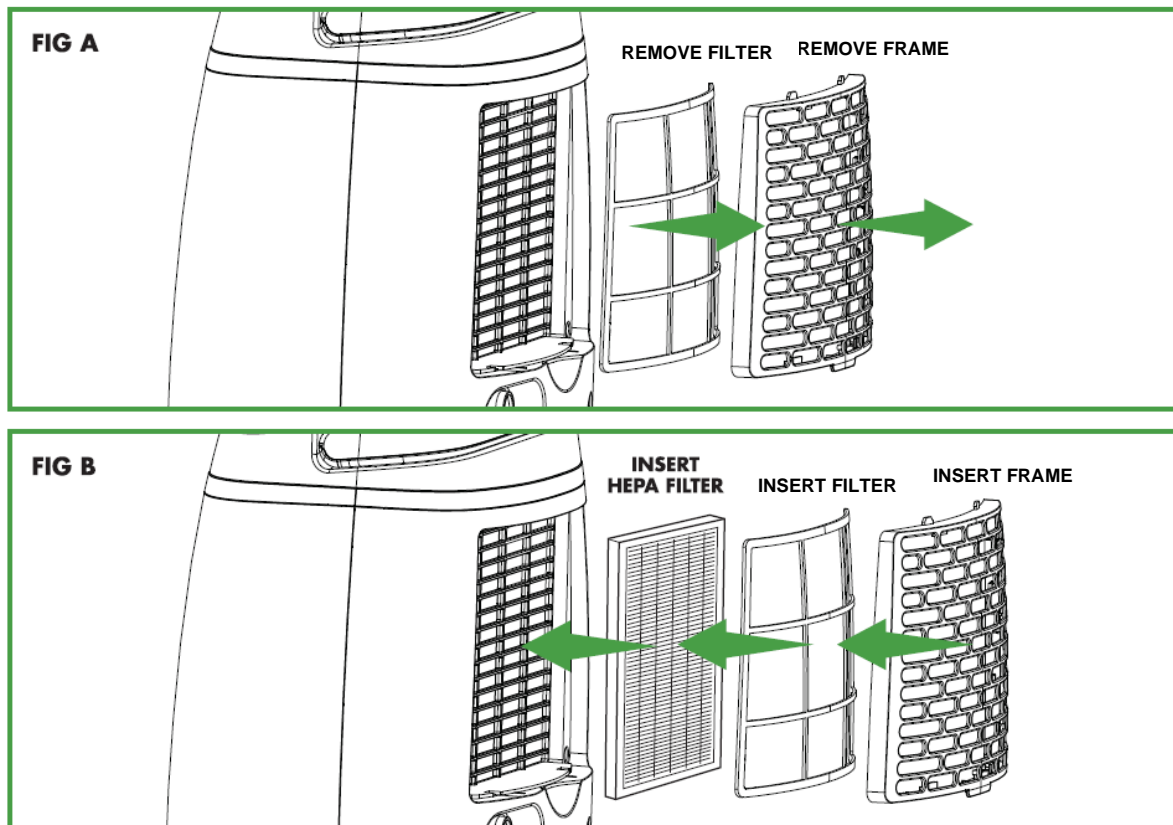
REPLACING THE HEPA FILTER

The HEPA filter is not life-long and must be replaced when the colour changes from white to grey (it depends on the environment the dehumidifier is being used in, but the HEPA filter will need replacing roughly every 3 months). The HEPA filter can be hoovered every so often in order to remove any dust or dirt.

Using a HEPA filter is optional. The dehumidifier can be used without the HEPA filter, this means it will just dehumidify the air and not purify it.

Replacement HEPA filters can be purchased from www.meaco.com.

Please see below two images demonstrating how to insert the HEPA filter:



STORAGE

If the machine will not be used for a long period of time, take the following steps:

1. Remove the plug from the socket and empty the water tank. Allow the water tank and the dehumidifier to dry completely, this can take a couple of days.
2. Clean the filter and store the device in a dust-free location away from direct sunlight, preferably covered with a sheet of plastic.

SPECIFICATIONS

		Meaco 12L Low Energy Dehumidifier	Meaco 20L Low Energy Dehumidifier
Extraction Rate	at 30°C and 80%rh	12 litres per day	20.38 litres per day
	at 20°C and 60%rh	4.77 litres per day	8.48 litres per day
Variable humidistat		Yes between 30%rh and 80%rh	Yes between 30%rh and 80%rh
Louvre		Yes (manual)	Yes (automatic)
Air flow (nominal)		90m ³ /hour	160m ³ /hour
Auto-restart		Yes	Yes
Filter		Yes (and an optional HEPA filter)	Yes (and an optional HEPA filter)
Noise level at one metre		Maximum 41dB(A)	Maximum 46dB(A)
Power supply		230V, 50Hz	230V, 50Hz
Power consumption at 20°C and 60%rh		157W	219W
Fan speeds		One	Two
Operating temperatures		+5 °C / +35°C	+5 °C / +35°C
Refrigerant		R290	R290
Tank		2.5 litres	6 litres
Dimensions (HWD)		475 x 325 x 248mm	595 x 385 x 290mm
Weight		9.8Kgs	13.6Kgs

TROUBLE SHOOTING

TROUBLE	CAUSE	SOLUTION
Unit does not operate	There is no power to the unit.	Plug in the unit and check the power outlet.
	The ON/OFF button has not been pressed.	Press the ON/OFF button.
Unit does not dehumidify or collects little water	Ambient temperature is lower than +5°C (C2 appears on the display and you will hear 3 long bleeps and 2 short bleeps).	Under this condition the dehumidifier becomes inefficient. It is recommended to switch off the dehumidifier.
	Ambient temperature exceeds 35°C (C2 appears on the display and you will hear 3 long bleeps and 2 short bleeps).	Under this condition the compressor is overloaded and switches off automatically. It is recommended to switch off the dehumidifier.
	The ambient air humidity is lower than 45%rh.	Under this condition the dehumidifier becomes inefficient and little water will be collected.
	The air filter is dirty and blocked.	The air filter must be cleaned. If the air filter is beyond cleaning, it must be replaced.
	The actual humidity is below the target humidity set point.	This is normal and is not a fault.
	The unit is in Air Purification (AP mode).	Use the arrows to change the dehumidifier into another mode.
The dehumidifier works but reduces the relative humidity insufficiently/there is little water in the water tank	The house is too large. This dehumidifier can dry up to about a three/five bedroom house (12/20L).	We recommend using a dehumidifier with a greater capacity.
	There are too many sources of moisture. Bathing, washing, drying clothes and cooking all add moisture to the air. Bottled gas heating can add too much moisture into the air for a dehumidifier.	We recommend using a dehumidifier with a greater capacity. Consider using a different heat source to a bottled gas heater.

	There is too much ventilation.	Reduce ventilation (e.g. close windows and shut external doors.)
	The air filter is blocked and the reduced air flow is effecting performance.	Clean the air filter/replace the HEPA filter.
The windows were clear and now condensation has returned	The outside air temperature has dropped and the windows are colder.	Use the dehumidifier on a lower relative humidity setting and run it 24 hours a day.
I cannot remove the condensation from my windows, even in continuous mode	The surface temperature of the windows is too low for a dehumidifier to prevent condensation. Common with single glazed windows and when the outside air temperature drops below freezing.	Keep running the dehumidifier on continuous mode 24 hours a day, when the air temperature outside increases the windows should clear of condensation.
Dehumidifier is blowing out warm air	The dried air is passed over heating coils before it is blown into the room as part of the dehumidification process.	This is normal, a dehumidifier is not an air cooler.
Dehumidifier is blowing out cold air	The dehumidifier does not cool the air, the air might feel cooler because it is moving in the same way as the air from a fan in summer feels cooler.	The room temperature will not be reduced by the dehumidifier and it is not cooling the air.
The display is not showing the humidity set point	The display shows the room relative humidity not the set point.	Press the up or down buttons once to see the target relative humidity.
I cannot change the set point, I get stuck on CO	You have been pressing the UP or DOWN button and have reached CO.	Press the opposite button to cycle in the other direction through the humidity options.
I keep my finger on the buttons but the display does not change	The buttons only move one step at a time.	Press the button and then lift your finger and press the button again to move through the settings.

The dehumidifier is noisy	The air filter is blocked or the unit is on an uneven surface.	Clean the filter and or put the dehumidifier on a flat surface. A dehumidifier will also be noisier on wooden floors than on carpet.
The humidity reading shows strange figures	The humidity sensor is blocked by dust or dirt.	Use a hair dryer to blow cold air onto the humidity sensor for 2-3 minutes. It is found at the back of the unit once the filter has been removed.
The humidity reading jumps up to a high figure	The dehumidifier is reading its internal humidity.	This is not a fault; it is part of the dehumidifiers process.
E1 Error Code	Coil temperature error. The unit still dehumidifies but is in defrost mode only.	Please contact Meaco.
E2 Error Code	The humidity sensor is broken. The unit still dehumidifiers but in continuous mode only.	Please contact Meaco.

If you need to contact Meaco, please use the contact details below.

Contact Number: **01483 234900**
 Contact Email: **customerservice@meaco.com / service@meaco.com**
 Live Chat: **www.meaco.com**

WARRANTY AND CUSTOMER SERVICE

There is a two-year manufacturer's warranty on your dehumidifier from the date of purchase. Please register your purchase at <https://meaco.com/warranty-register> - as a thank you, you will be entered into our monthly free prize draw to help support the David Shepard Wildlife Foundation. Registering also allows us to keep you update with any important developments concerning your product.

Within the two-year manufacturer's warranty, all manufacturing defects will be repaired free of charge (excluding damage to the units' filter and water tank which can be subject to wear and tear).

The following applies:

1. Any repairs or replacement of components during the warranty period will not result in an extension of the warranty period.
2. The warranty will expire if any alterations have been made, not genuine components have been fitted or if the dehumidifier has been repaired by a third party.
3. Components subject to normal wear and tear are not covered by the warranty.
4. The warranty is only valid on presentation of the original, unaltered, and date-stamped purchased receipt.
5. The warranty does not cover damage caused by actions that deviate from those as described in the user's manual or by neglect.
6. The warranty does not cover faults caused by dirt or by third-party products.
7. The warranty does not cover accidental damage.
8. All claims for compensation, including consequential damage, will not be entertained.
9. Using a third-party switching device that turns the dehumidifier on or off via the mains will invalidate the warranty.

For the full list of the warranty terms and conditions please visit: www.meaco.com/warranty-terms.

To prevent unnecessary expenses, we recommend that you always carefully read the user's manual first. If this does not provide a solution, please call Meaco and we will be happy to help.

This dehumidifier has been imported into the UK by:

*Meaco (UK) Limited
Meaco House
Parklands
Railton Road
Guildford
GU2 9JX*

*Telephone: 01483 234900
Fax: 01483 232700
Email: service@meaco.com
Website: www.meaco.com*

Please record, for future reference, your date of purchase and where you bought the dehumidifier from here.

Date of purchase:

Purchased from www.meaco.com (if not, then please record the supplier's name below).

Suppliers name:

If your dehumidifier develops a fault at any time, please contact us and we will always try and help you as best we can.

Please keep hold of the original box and packaging your unit arrived in just in case we need to collect the dehumidifier from you for a repair/service in the future.



This marking indicates that this product should not be disposed with other household wastes throughout the EU. To prevent possible harm to the environment or human health from uncontrolled waste disposal, recycle it responsibly to promote the sustainable reuse of material resources. To return your used device, please use the return and collection systems or contact the retailer where the product was purchased. They can take this product for environmental safe recycling.

