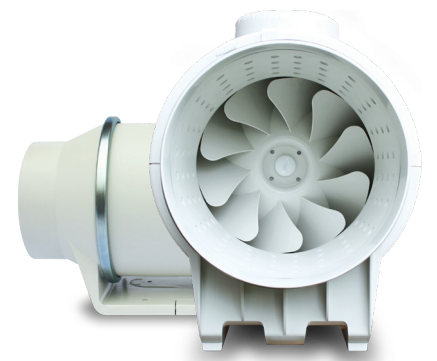


SILENT MV range



Ultra Quiet In-line Duct Fans



Ultra quiet and low profile helicocentrifugal in-line fans suitable for a wide range of domestic and commercial applications. Easy to install and maintain, the SILENT MV fans are fitted with sound absorbent insulation to guarantee exceptional performance with significant noise reduction.*

*Except for the SILENT MV 160/100, which is fitted with a patented silent axial motor.

Features

- Sealed for life ball bearings
- Sound absorbent insulation
- IP44 rated**
- 360° rotating connection box
- Fitted with a two speed motor

Benefits

- Whisper quiet running
- High performance
- Complies with Building Regulations
- Easy installation
- Easy maintenance
- Flexible location
- Five year guarantee

Presenting the world's quietest in-line fans

Presenting the world's quietest in-line fan range in their class, the SILENT MV range creates a quantum leap forward in technology to improve the acoustic performance of up to 12 dB(A) compared with similar products on the market.

The SILENT MV range is the result of an intense R&D, technological and economic investment to ensure that you can be

guaranteed of a product range that provides exceptional performance with significant noise reduction. Following extensive aerodynamic testing, we have been able to not only reduce the amount of noise produced, but also ensure that the noise level that is actually emitted is at a far lower frequency, providing a quiet and ambient environment.

Versatility

The SILENT MV fan range offers one of the most versatile fan systems on the market today. Due to its flexibility it can be used in a multitude of small and medium fan installations.

Especially advantageous in applications where the system may be running for long periods throughout the day, the acoustic benefits of the SILENT MV fans ensure that optimum comfort is achieved without the disturbance of noisy ventilation systems.



ORDER CODE	SILMV160/100S	SILMV160/100T*	SILMV250/100	SILMV350/125	SILMV500/150	SILMV800/200	SILMV1000/200	SILMV1300/250	SILMV2000/315
Sealed For Life Ball Bearings	▪	▪	▪	▪	▪	▪	▪	▪	▪
Multi Speed	▪		▪	▪	▪	▪	▪	▪	▪
Adjustable Timer		▪							

*Timer versions also available for the: SILMV250/100, SILMV350/125, SILMV500/150, SILMV800/200 & SILMV1000/200. Timer versions are single speed only.

Once installed, you'll never know it exists

Innovative Engineering

The SILENT MV has been designed with state of the art technology to achieve results to satisfy the most demanding specifier. The low profile and compact design of the helicocentrifugal fans enable them to be installed where space is restricted, such as false ceilings.

The unique perforated design of the casing directs sound waves into the high density sound absorbent material to prevent air leakage and minimise noise.



The connection box can be rotated 360° to enable the power cable to be easily connected.



Duct connections are constructed out of flexible rubber gaskets, which minimise sound and vibrations to the ducts.



Support bracket can be used to install the SILENT MV fans on either a wall or a ceiling.

How does it work?

Sound waves produced inside the SILENT MV are directed through the perforated inner cover and absorbed by the layer of sound absorbent material. The SILENT MV 160/100 is fitted on silent elastic blocks.

Ease of Maintenance

The central body of the SILENT MV can be easily dismantled from the connections to enable rapid maintenance, without the need to interfere with the ducting.

Ease of Installation



Loosen the fixing clamps



Open clamps on both sides



Remove the fan body



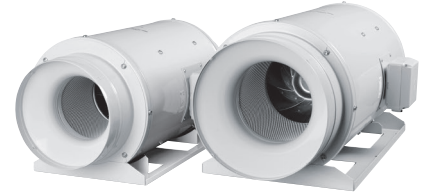
Remove the terminal box lid



Carry out the wiring of the unit



Replace the body & tighten clamps



The SILMV1300/250 and SILMV2000/315 are in-line mixed flow fans with a low profile to meet ventilation needs in commercial and industrial applications, especially where sound may be a problem. Constructed from sheet steel with epoxy polyester paint, acoustic insulation (MO) glass fibre, within an outer shell. External terminal box IP55. Removable fan body with 3 speed motor, single phase 230V-50/60Hz speed controllable, IP44, Class F, external rota aluminium motor with capacitor and thermal protection.

These fans retain the same philosophy as the rest of the SILENT MV range; to improve comfort whilst achieving a substantial reduction in radiated noise level, without sacrificing airflow performance and ease of installation.

Low Profile

Ideal for installations where space is restricted, as in false ceilings.

Support Bracket

Suitable for wall or ceiling mounting, fixing brackets to the motor body are included.



Low Noise Level

- 1 Aerodynamic inlet to improve airflow and reduce sound
- 2 Attenuating perforated skin

